



KEY VOCABULARY

Still life

Form

Tone

Shade/Shadow

Highlight

Mid-tone

Cast shadow

Cross hatching

Tints/Shades

A picture of something that **does not move**

Form means the **3d shapes in art**. In a drawing or painting an artist can create the illusion that an object is 3d rather than flat

How **dark or light something is**. Tones are created by the way light falls on a 3d object

The parts of an object that are **darker**

The parts of an object where the **light is strongest or lightest**

Tones **between the highlights** and shadows

Where an **object makes a shadow** on something else e.g. a table underneath it

A technique of creating tone by drawing **lines which cross over each other**

A tint is the mixture of a colour with white, which **increases lightness**, and a shade is the mixture of a colour with black, which **reduces lightness**

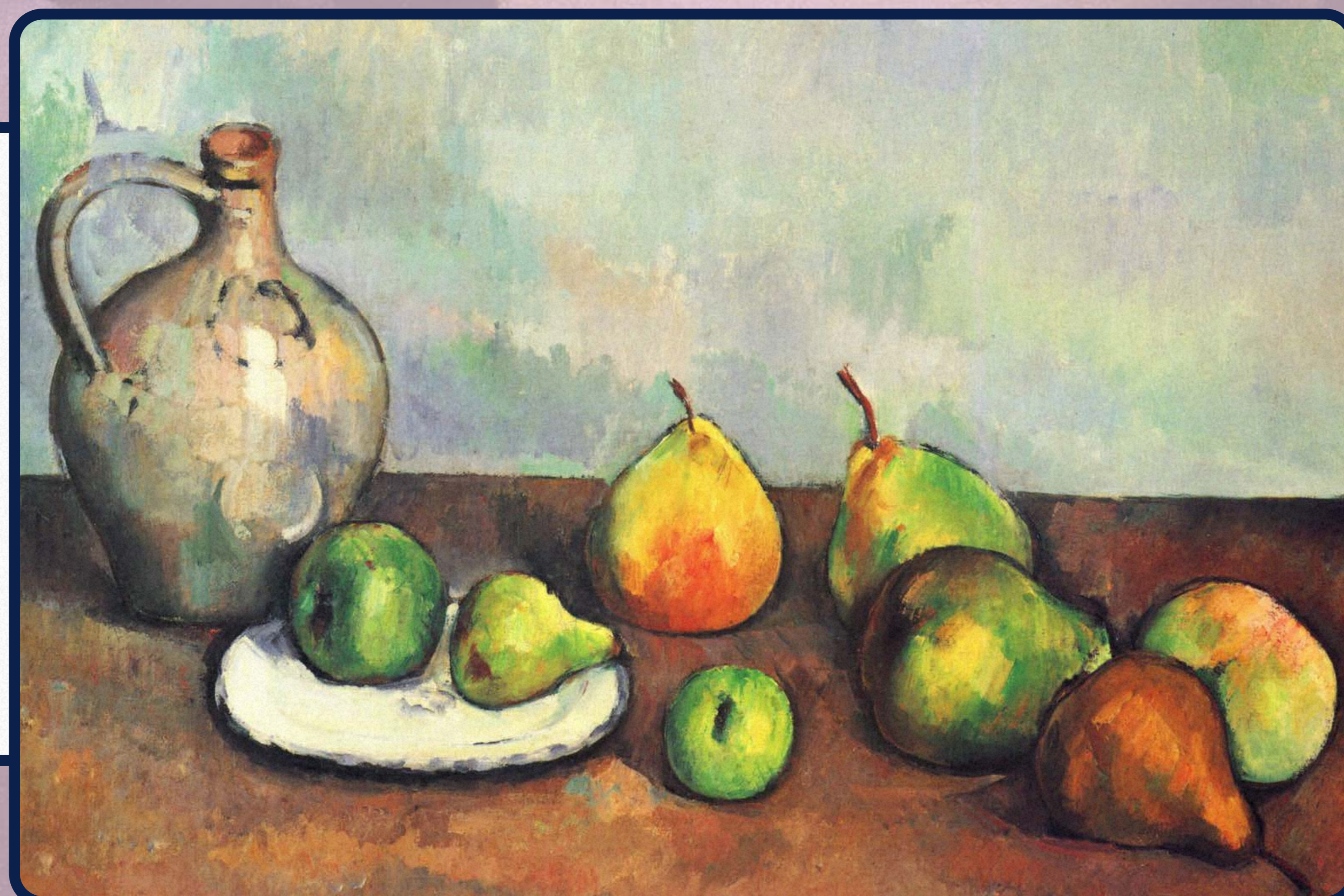
From Herculaneum



Still Life with Peaches and a Glass (50 CE)

Still Life, Pitcher and Fruit (1894)

Paul Cézanne



Still Life with Five Objects, (1956)

Giorgio Morandi