

KEY VOCABULARY

Modernism

A style of art and design **starting in the 1850s that rejected previous artistic styles**, was often abstract, experimental and focussed on materials

Statue

A **sculpture** of a person

Cubism

A way of painting and drawing where **artists show more than one view** of something in the same picture, like looking at many sides of a cube at once

Abstract

Art that **doesn't try to look like something**, but uses shapes, colours, lines and form to achieve an effect

Figurative

Art that shows **something of the real world** in it. The opposite of abstract art

Impasto

An **area of thick paint** in a painting

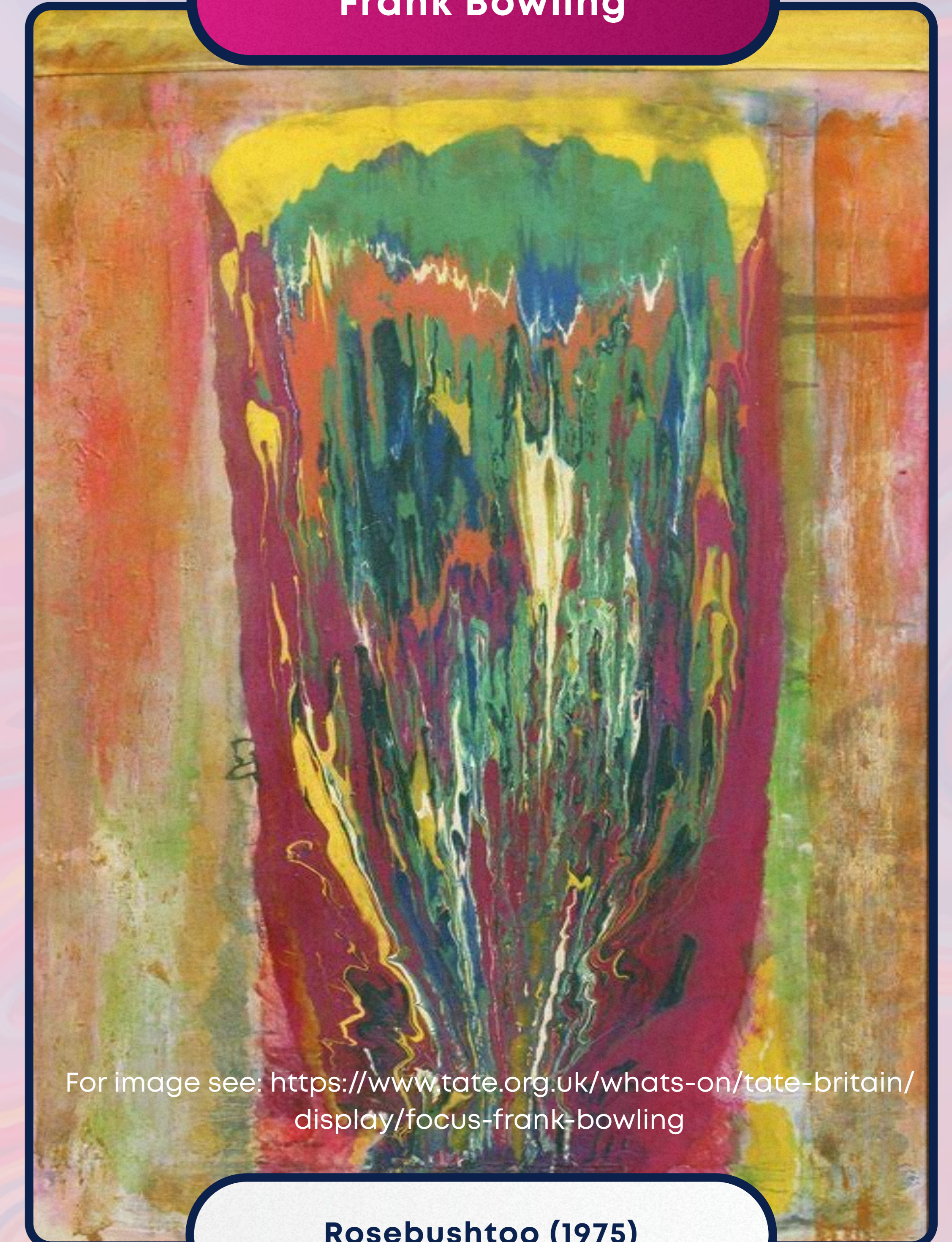
Pablo Picasso



For image see: <https://www.tate.org.uk/art/artworks/picasso-bowl-of-fruit-violin-and-bottle-l01895>

Bowl of Fruit, Violin and Bottle (1914)

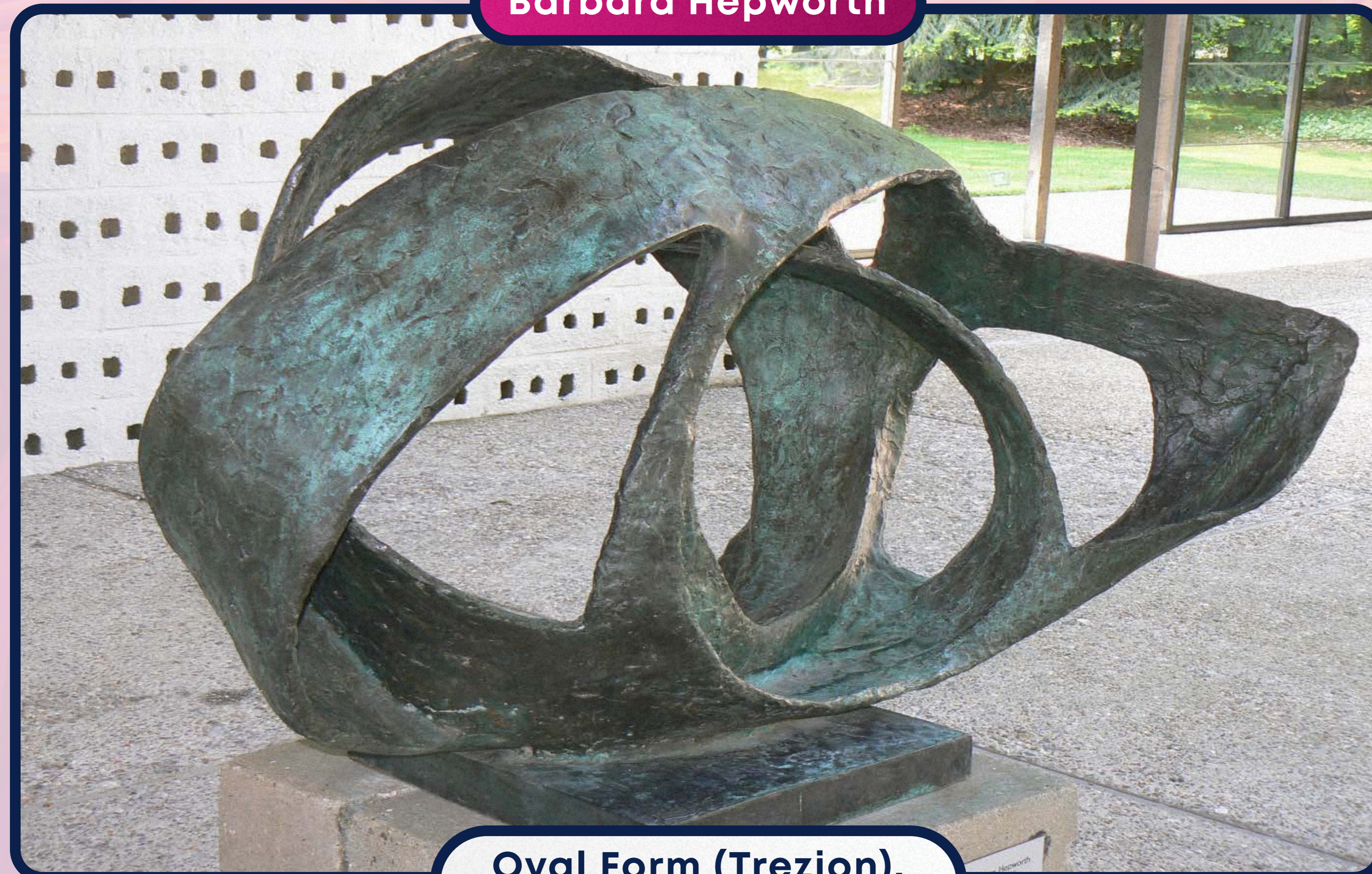
Frank Bowling



For image see: <https://www.tate.org.uk/whats-on/tate-britain/display/focus-frank-bowling>

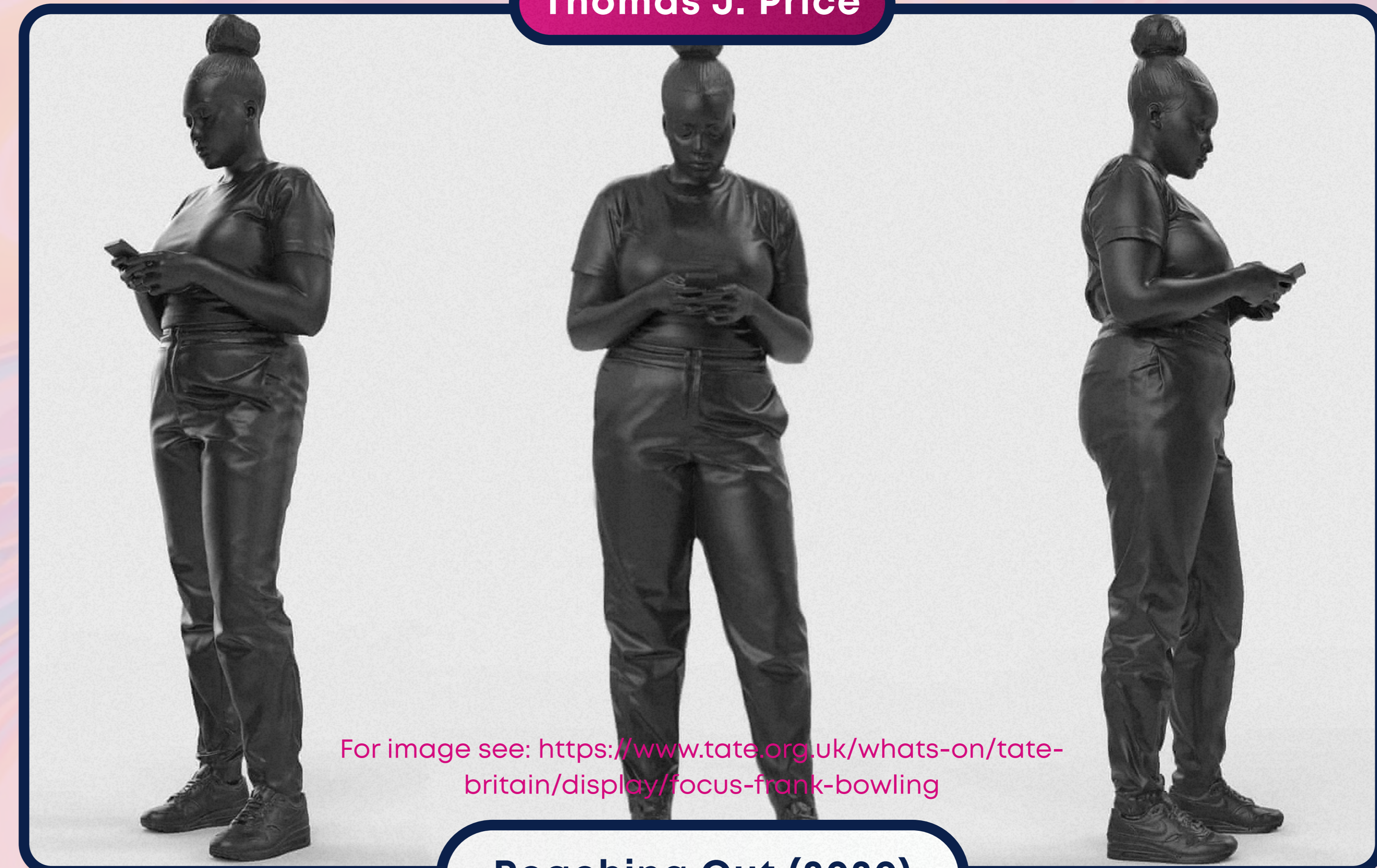
Rosebushtoo (1975)

Barbara Hepworth



Oval Form (Trezion), 1962/1963

Thomas J. Price



For image see: <https://www.tate.org.uk/whats-on/tate-britain/display/focus-frank-bowling>

Reaching Out (2020)